

XPass 2

Outdoor Compact RFID Device





XPass 2 is an outdoor compact RFID device based on Suprema's state-of-the-art RFID technology and multi-hardware platform. With the multi-form factor technology, mullion-type, gangbox-type, and gangbox keypad-type are all supported which provides perfect installation in various environments. XPass 2 also supports dual-frequency (125kHz / 13.56MHz) RFID technology and can read the mobile cards using NFC and BLE, the latest mobile communication technologies. Packed in a rugged IP65/IP67 rated dust & waterproof performance as well as IK08 rated vandal-proof structure, suitable for tough environment and outdoor installation.

suprema
SECURITY & BIOMETRICS

XPass 2

Outdoor Compact RFID Device

Features

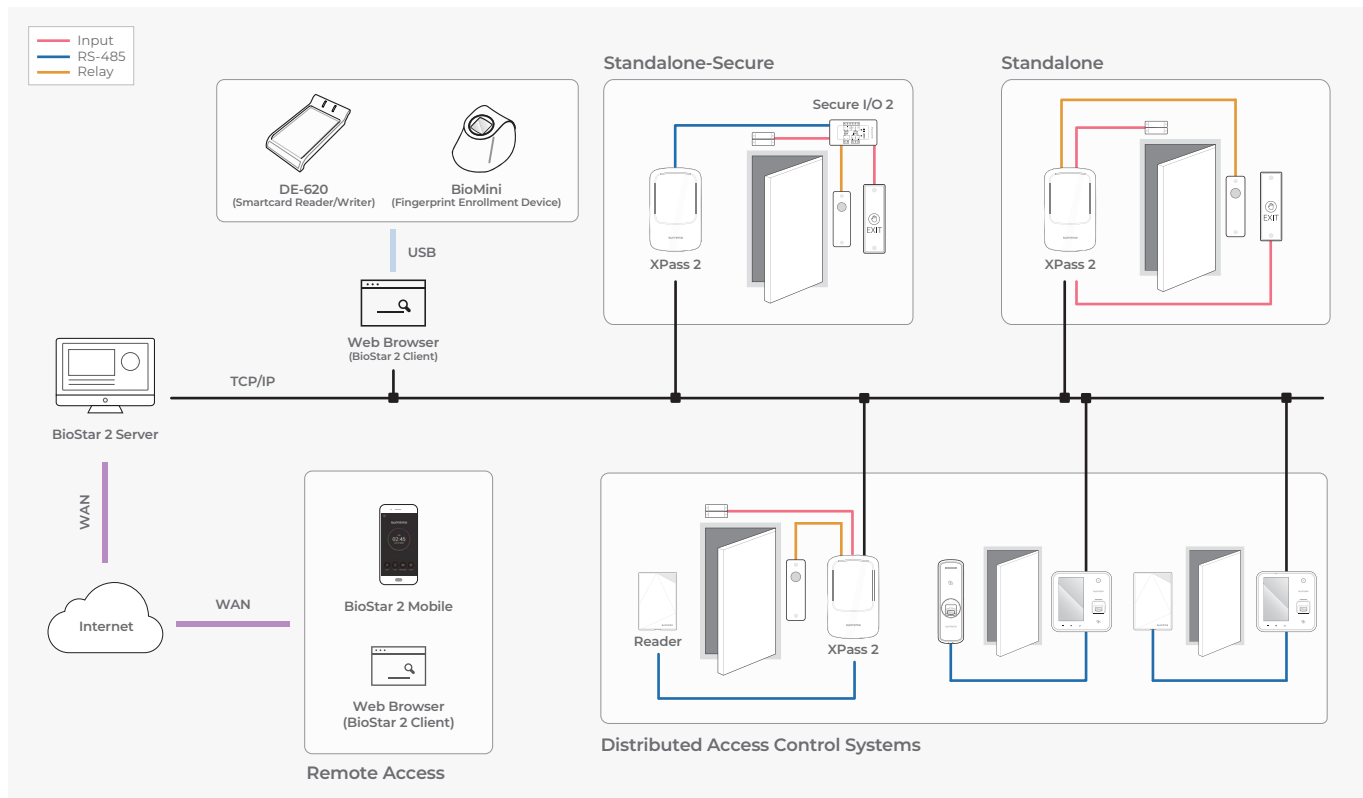
-  **Mobile Access**
-  **Industry standard communication via OSDP**
-  **Multi-type hardware structure**
-  **Enhanced security with the Secure Element**
-  **IP67 - Water and Dust Resistant**
-  **IK08 - Vandal Resistant**
-  **Multi-card Reading**
-  **Power over Ethernet**
-  **Homing bump on keypad for the visually impaired**

Specifications

RF Option	125kHz EM & 13.56MHz MIFARE, MIFARE Plus, DESFire, DESFire EV1/EV2/EV3*, FeliCa
CPU	1 GHz
Memory	4GB Flash + 64MB RAM
Max. Users	200,000
Max. Text Logs	1,000,000
Mobile card	NFC, BLE
Ingress Protection	IP67
Vandal Proof	IK08
Installation type	XP2-MDPB: Mullion XP2-GDPB, XP2-GKDPB: Gangbox
Keypad	XP2-MDPB, XP2-GDPB: Not Supported XP2-GKDPB: Supported (3x4)
Ethernet	Supported (10/100 Mbps, auto MDI/MDI-X)
RS-485	1ch Host or Slave (Selectable)
Wiegand	1ch In or Out
TTL Input	2ch Input
Relay	1 Relay
PoE	Supported (IEEE 802.3af compliant)
Sound	Multi-tone buzzer
Operating Temperature	-35 °C ~ 65 °C
Operating Humidity	0% ~ 95%, non-condensing
Power	DC 12V 0.5A, DC 24V 0.3A
Dimensions (WxHxD, mm)	XP2-MDPB: 48 x 145 x 27 XP2-GDPB, XP2-GKDPB: 80 x 130 x 25
Certificates	CE, FCC, KC, RoHS, REACH, WEEE, SIG

* DESFire EV2/EV3 cards are supported by having backward compatibility of DESFire EV1 cards. CSN and smart card functions are compatible with XPass 2.

System Configurations




CDG Computer Peripheral and Supplies Ltd.

Computer Peripheral and Supplies Ltd.

244 ซอยพัฒนาการ 53 แขวงพัฒนาการ เขตสวนหลวง กรุงเทพมหานคร 10250

244 Soi Pattanakarn 53, Pattanakarn, Suanluang, Bangkok 10250 Thailand

 facebook.com/cps.co.th
 Tel. 02-7224040 Ext.9
 www.cps.co.th

 scan here
 ติดต่อสอบถาม
 ข้อมูลเพิ่มเติม 